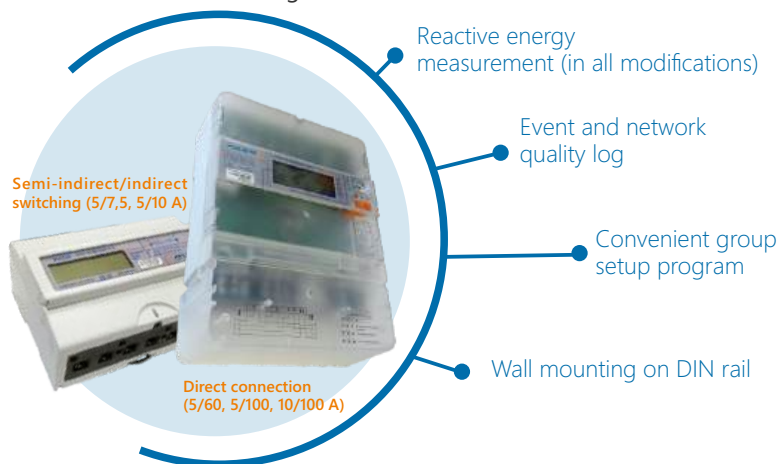




## Electricity 3-phase multi-tariff meters «Pulsar»

They are designed for measuring and recording active and reactive electrical energy in single- or multi-tariff mode, measuring electrical energy quality indicators in three-phase four-wire AC electrical networks with a frequency of 50 Hz.

Available according to IEC 62052.



### Interfaces

- Optical port
- RS-485 external power supply
- RS-485 internal power supply
- LoRa

### Technical data

Accuracy class for measuring active IEC 62053-22/reactive energy according IEC 6253-21	0,2S; 0,5S; 1 / 0,5; 1; 2
Nominal voltage Unom, V	3 x 230/400
Basic (I6) or nominal (Inom)/maximum current (Imax), A	5/60; 5/7,5; 5/10; 5/100; 10/100
Set range of operating voltages, V	(0,9...1,1) Unom
Extended operating voltage range, V	(0,8...1,15) Unom
Maximum operating voltage range, V	(0...1,15) Unom
Basic error of voltage measurement, %	0,5
Basic error of current measurement, %	0,5
Basic error of measuring network frequency, Hz	0,05
Accuracy of the clock under normal conditions, sec/day	±0,5
Service life of lithium battery of watches, years	16
Data retention during power outages, years	32
Degree of protection against water and dust penetration	IP51
Operating temperature range, °C	-40...+60
Storage temperature range, °C	-40...+70
Weight of the counter, kg no more	0,8
Inter-verification interval, years	16
Average service life of the meter, years	32
Dimensions of indirect/semi-indirect inclusion (HxLxW), mm	73x150x102
Dimensions of direct connection HxLxW, mm	75x260x175