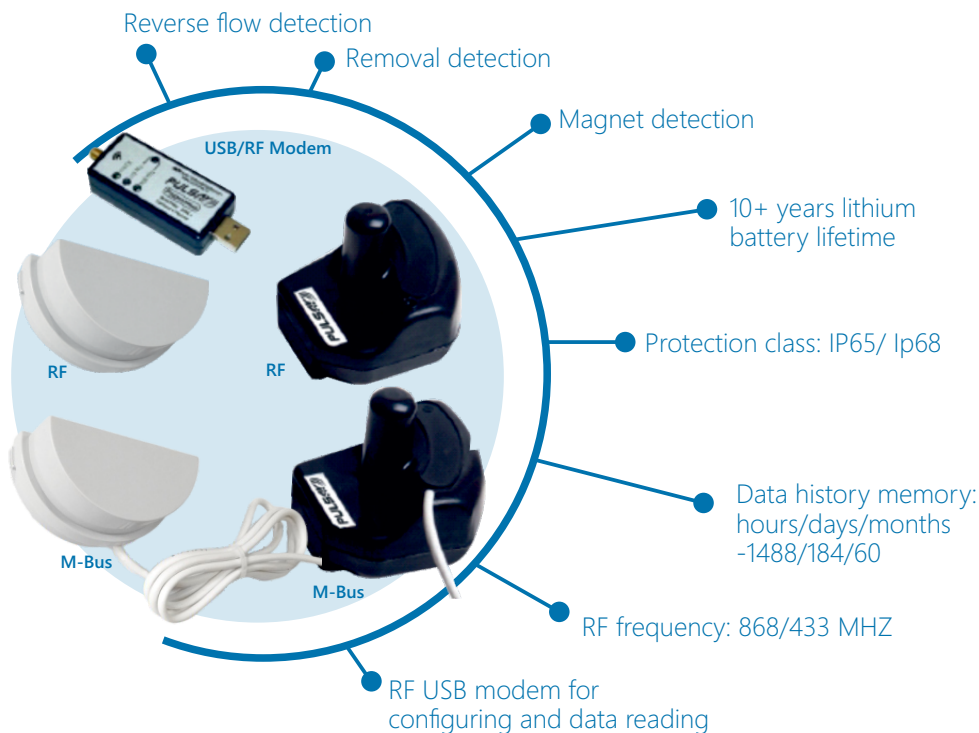


# Communication modules for water meters «Pulsar»

Available according to ISO 4064.

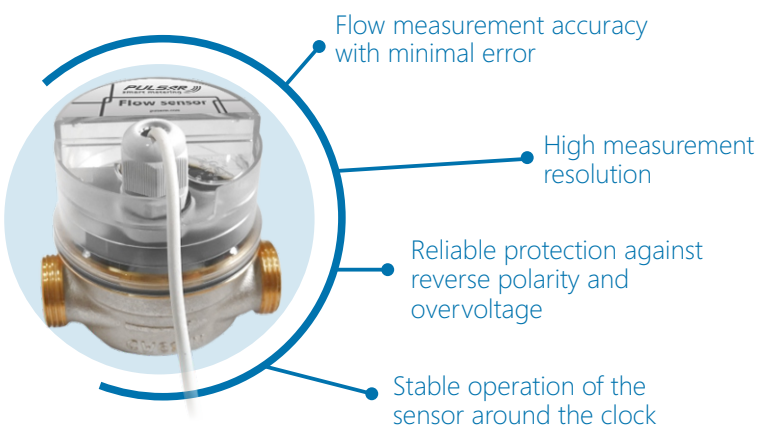


## Different communication interfaces

- RS-485
- M-Bus
- Wireless M-Bus
- LoRa
- Ultra narrow RF band (Pulsar IoT)

# Flow sensors «Pulsar»

Available according to ISO 4064.



## Technical data

Sensitivity threshold, m3/ hour	0,015
Max consumption Qmax m3/hour	3
Rated consumption, Qn m3/hour	1,5
Transitional consumption, Qt m3/hour	0,12
Min consumption, Qmin m3/hour	0,03
Power supply voltage, V	From 4 to 24
Maximum output current, mA	50

✉ [export@pulsarm.ru](mailto:export@pulsarm.ru)  
 📍 390027, Russia, Ryazan, Novaya str, 51V  
 ☎ 7 (4912) 24-02-70

