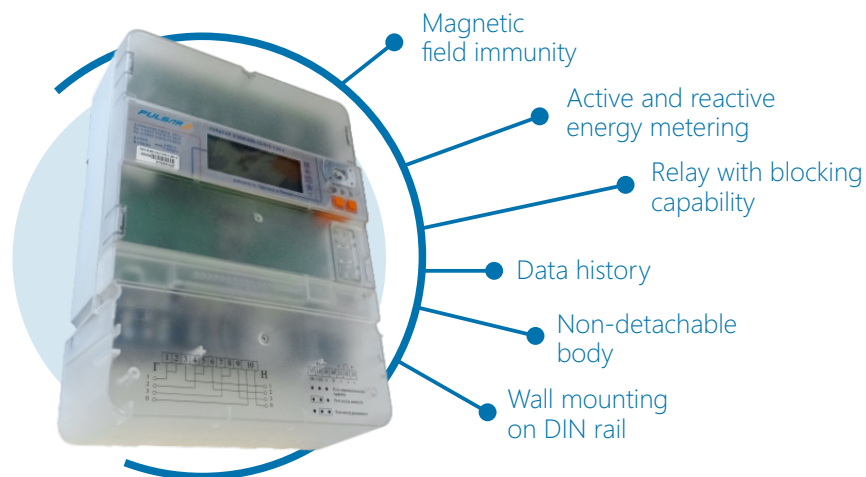


# Electricity multi-phase meters «Pulsar» DLMS

Designed for multi-tariff metering of active and reactive energy in three-phase four-wire electrical networks of alternating current with a frequency of 50 Hz.  
Available according to IEC 62052.



## Interfaces

- Optical port
- RS-485
- 2 RS-485
- RS-485; NB-IoT+2G
- 2 RS-485; NB-IoT+2G
- LoRa
- NB-IoT
- NB-IoT+2G
- 2G
- PLC+RF
- Ethernet
- RF

## Technical data

Nominal phase/interphase AC voltages $U_{nom}$ , V	3×57,7/100	3×(120-230)/ (208-400)	3×230/400
<b>Accuracy classes for measuring active electrical energy</b>			
IEC 62053-22		0,2S; 0,5S	
IEC 62053-21		1	
<b>Accuracy classes in measuring reactive electrical energy</b>			
GOST 31819.23-2012		1; 2	
Maximum operating voltage range, V	0...75	0...265	0...265
Nominal network frequency, Hz		50±7,5	
Basic (I6) or nominal (I <sub>nom</sub> )/maximum current, A	1/1,5; 1/7,5;	5/7,5; 5/10;	5/7,5; 5/10;
	1/10; 5/7,5;	5/60; 5/100;	5/60; 5/100;
	5/10	10/100	10/100
Data retention during power outages, years		32	
Operating temperature range, °C		-40...+70	
Storage temperature range, °C		-40...+70	
Weight of the counter, kg no more		1,8	
Archives with variable integration time/hours/days/months		100 days (at 30 minute intervals) /4320/180/42	
Inter-verification interval, years		16	
Service life of lithium battery, years		16	
Average service life, years		35	
Overall dimensions (height x length x width), mm		258x173x75	

✉ [export@pulsarm.ru](mailto:export@pulsarm.ru)

📍 390027, Russia, Ryazan, Novaya str, 51V

☎ 7 (4912) 24-02-70

